



Department Report

Report Title: Public Works—September 2023

Name and Title: Mark Buchanan, PW Director/City Engineer

Recently Completed:

- Sunflowers planted at old Kindergarten. Fingers crossed for a healthy and on-time crop.



- The Hancock Park Solid Waste Facility





- Removal of vegetation at Mount Hope Cemetery as recommended by the Cemetery Committee.



- The reservoir life jacket loaner stations.



- Removal of large amounts of sediment from reservoir and reconstruction of bank by city crews.



- Repair of a large water main break in Sky Country and other smaller main and service breaks.





- Construction of an improved and much safer storm drainage structure on Mechanic Street by city crews.

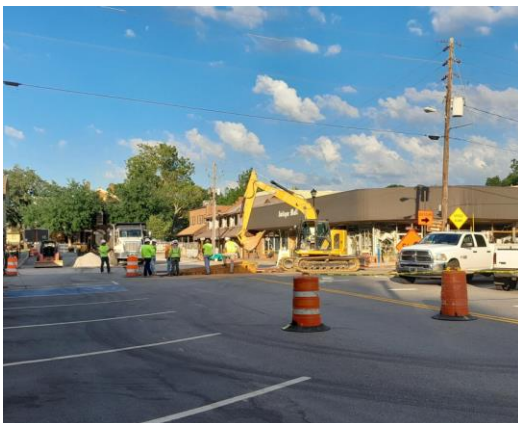


- Mechanicsville curb and gutter and storm drain installation.



Ongoing:

- East Main Street repairs. Most of the nighttime work in the North Grove intersection is complete. Temporary surfacing should be in place for Gold Rush and coordination has occurred among staff, the contractor and the Gold Rush sponsors. Above ground repairs will begin the last week of October and should be much shorter in duration than the subsurface repairs.



- Morrison Moore Pedestrian Bridge and Sidewalk design and permitting. At this time, construction is expected in late 2024.
- North Grove St. sidewalk upgrades between Main Street and Subway.



- Park Street water, sewer and storm project has reached award phase.
- Golden Avenue storm drain. Coordination with neighboring property owners regarding necessary easements is ongoing.

Upcoming (these projects are currently either in concept, design or build phase):

- Selected portions of the Arcadia Street water and sewer main project/Mechanic Street to Morrison Moore sidewalk.
- Golden Avenue culvert replacement.
- Continuation of the North Grove sidewalk replacement project from Subway to Skyline.
- Memorial Park Cemetery storm drain installation. To be performed by city crews. Materials received...working with owner of adjacent parcel.