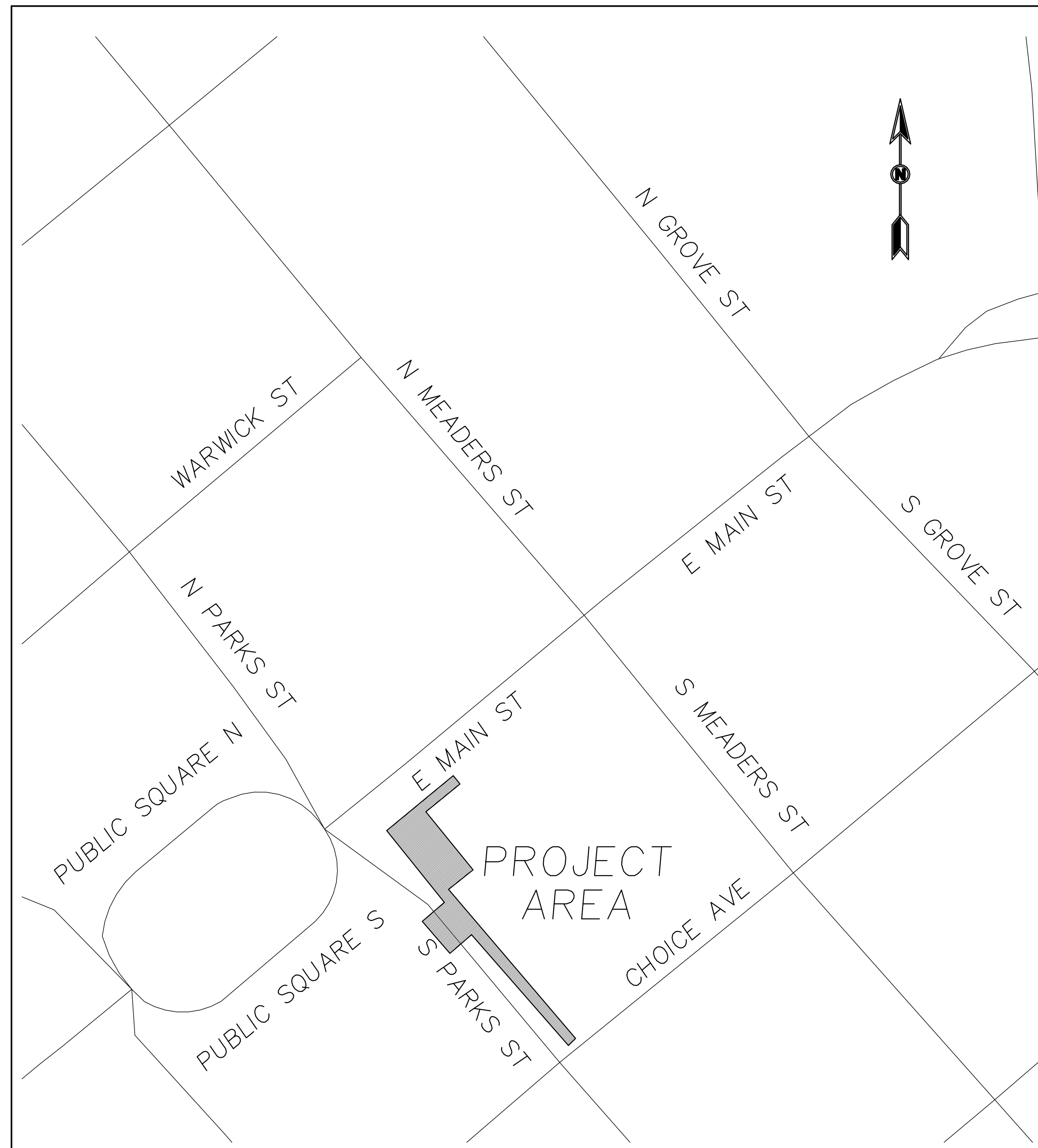


CONSTRUCTION PLANS FOR

CITY OF DAHLONEGA PLAZA IMPROVEMENTS

SHEET INDEX	
1	COVER SHEET
2	EXISTING CONDITIONS AND DEMO PLAN
3	SITE PLAN
4	CONSTRUCTION DETAILS



CONSTRUCTION NOTES:

1. ALL CONCRETE TO BE GDOT CLASS A (3,000 PSI) UNLESS NOTED OTHERWISE.
2. ALL PVC SEWER PIPES WILL BE BACK FILLED WITH COMPACTED GAB.
3. ALL CONSTRUCTION STAKING WILL BE CONDUCTED UNDER THE SUPERVISION OF A GEORGIA REGISTERED PROFESSIONAL LAND SURVEYOR.
4. CONTRACTOR WILL FIELD VERIFY LOCATION AND DEPTH OF ALL UTILITIES.
5. ALL IMPROVEMENTS TO CONFORM WITH CITY OF DAHLONEGA AND GEORGIA DEPARTMENT OF TRANSPORTATION CONSTRUCTION STANDARDS AND SPECIFICATIONS, LAST EDITION.
6. EXISTING ASPHALT WILL BE MILLED TO ALLOW FINAL SURFACE TO MATCH EXISTING ASPHALT ELEVATION. MILLED EDGES WILL BE SAW CUT TO PROVIDE A VERTICAL TIE IN SURFACE FOR NEW ASPHALT.
7. BRICK PAVERS SHALL BE FLUSH WITH TOP OF CURB. PAVERS TO MATCH EXISTING ELEVATIONS AT ALL TIE IN LOCATIONS.
8. ALL SIGNS, TRASH CANS AND BENCHES TO BE REINSTALLED IN EXISTING LOCATION UNLESS RELOCATED PER PLAN.
9. ALL LABOR, MATERIAL AND DISPOSAL COSTS REQUIRED TO COMPLETE PROJECT PER PLAN WILL BE INCLUDED IN UNIT RATES.
10. ALL AREAS DISTURBED DURING CONSTRUCTION TO BE GRADED TO MATCH ADJACENT SURFACES, STABILIZED AND REVEGETATED WITH TALL FESCUE.
11. AREA OF UNACCEPTABLE SUBGRADE EXCAVATION WILL BE BACKFILLED WITH GAB IN MAXIMUM 1 FOOT THICK LIFTS.
12. ALL PAVEMENT MARKINGS TO BE REPLACED WITH THERMOPLASTIC TRAFFIC STRIPE MEETING GDOT STANDARD SPECIFICATIONS SECTION 653.

ESTIMATED QUANTITIES:

ITEM	UNITS	AMOUNT
DEMO FLAT CONCRETE	SY	57
DEMO BRICK PAVER	SY	208
DEMO HEADER CURB	LF	28
DEMO TILE (INCLUDING CONCRETE SUBGRADE)	SY	178
INSTALL 6" SRD 26 PVC SEWER SERVICE (INC. FITTINGS)	LF	75
GAB SEWER SERVICE TRENCH BACKFILL	TON	20
GDOT 1401 PAVEMENT PATCH FOR OPEN CUT (4500 PSI CONCRETE)	LF	26
ASPHALT MILLING (1 1/2")	SY	95
INSTALL GDOT A3 (TYPE B) ADA WHEELCHAIR RAMP	EA	2
BRICK PAVERS 4" GAB SUBGRADE	TON	76
BRICK PAVERS 4" CONCRETE SUBGRADE	CY	46
BRICK PAVERS SIDEWALK (INC. MORTAR)	SY	405
4" THICK CONCRETE SIDEWALK	SY	2.3
12.5 MM ASPHALT	TON	9
ELECTRICAL RUN WITH PLUGS	LS	1
THERMOPLASTIC 5" WHITE SOLID STRIPE	LF	55
THERMOPLASTIC 8" WHITE SOLID STRIPE	LF	146
THERMOPLASTIC 5" YELLOW SOLID STRIPE	LF	50
TRENCH DRAIN	LF	58
1019 DROP INLET	EA	1
9031U JUNCTION BOX	EA	3
12" HDPE PIPE	LF	220
12" RCP PIPE	LF	20
CONCRETE SEWER ENCASEMENT	CY	1.5

CONTRACTOR TO VERIFY QUANTITIES

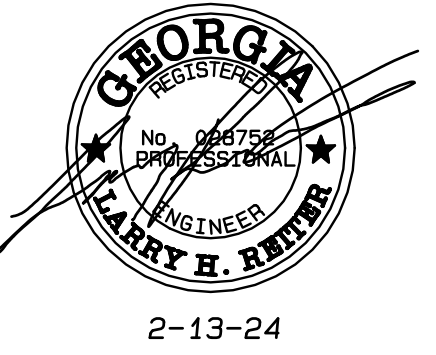


CALL BEFORE YOU DIG!
1-800-282-7411

OWNER AND DEVELOPER
CITY OF DAHLONEGA
465 RILEY ROAD
DAHLONEGA, GA 30533
PHONE: (706) 864-6133
ATTN: MARK BUCHANAN
mbuchanan@dahlonega.gov
VINCE HUNSINGER
vhunsinger@dahlonega.gov

24-HOUR CONTACT
VINCE HUNSINGER
(706) 973-9933

DES
DAVIS
ENGINEERING & SURVEYING
24 DAWSON VILLAGE WAY S.
DAHLONEGA, GA 30534
PH: (706) 265-1234
DAVISENGINEERS.COM



2-13-24

REVISION	DATE	DESCRIPTION
REV 1	11-20-23	REVISED PER CITY COMMENTS
REV 2	12-05-23	REVISED PER CITY COMMENTS
REV 3	2-13-24	ADDED TRENCH DRAIN

COVER SHEET
CITY OF DAHLONEGA
PLAZA IMPROVEMENTS
 CITY OF DAHLONEGA
 LUMPKIN COUNTY, GEORGIA

DRAWN BY: LR
FIELD CREW:
DATE: 10-20-23
CHECKED BY:

SHEET NO.
1 OF 4
PROJECT NO.
2023-453

OWNER AND DEVELOPER
 CITY OF DAHLONEGA
 465 RILEY ROAD
 DAHLONEGA, GA 30533
 PHONE: (706) 864-6133
 ATTN: MARK BUCHANAN
 mbuchanan@dahlonega.gov
 VINCE HUNSINGER
 vhusinger@dahlonega.gov

24-HOUR CONTACT
 VINCE HUNSINGER
 (706) 973-8933

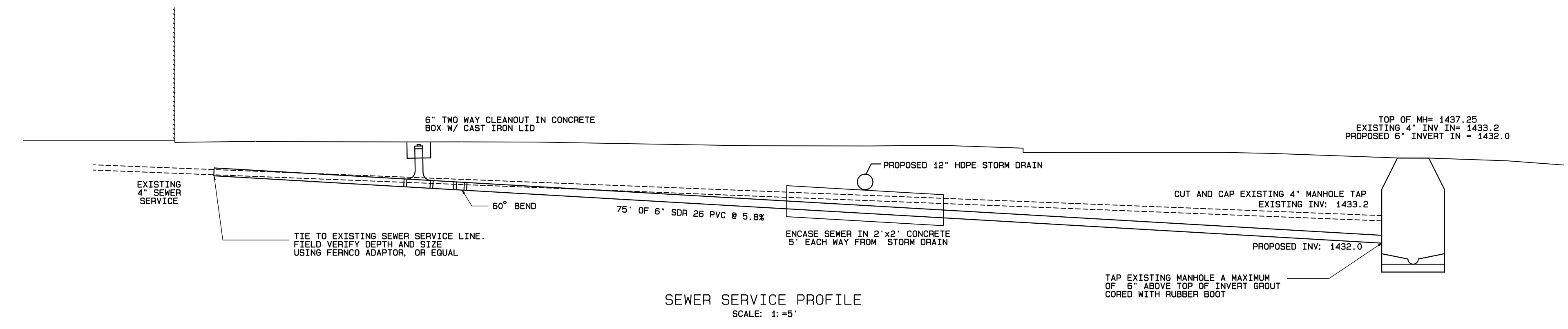


CALL BEFORE YOU DIG!
 1-800-282-7411

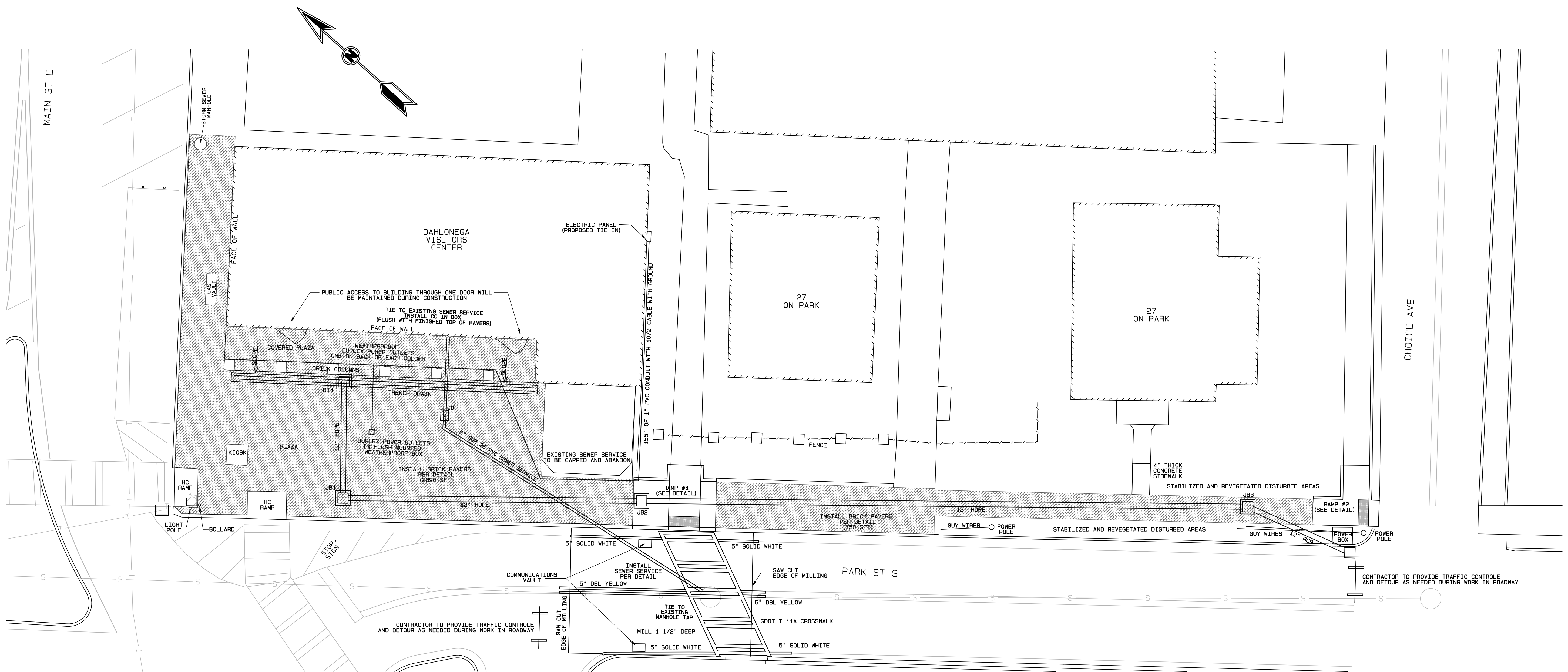
DES
DAVIS
 ENGINEERING & SURVEYING
 24 DAWSON VILLAGE WAY S.
 DANSONVILLE, GA 30534
 PH: (706) 265-1234
 DAVISENGINEERS.COM



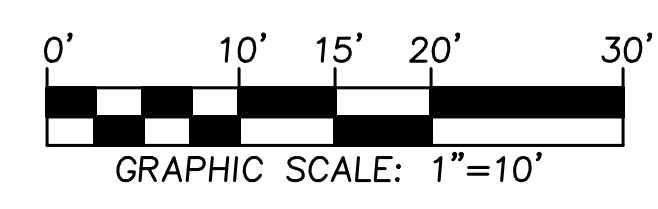
REVISION	DATE	DESCRIPTION
REV 1	11-20-23	REVISED PER CITY COMMENTS
REV 2	12-05-23	REVISED PER CITY COMMENTS
REV 3	2-13-24	ADDED TRENCH DRAIN



SEWER SERVICE PROFILE
 SCALE: 1"=5'



MILLED EDGES TO BE SAW CUT TO PROVIDE A VERTICAL TIE IN SURFACE FOR NEW ASPHALT.
 ALL ASPHALT MATERIALS AND INSTALLATION TO MEET CURRENT GDOT SPECIFICATIONS.
 MATERIAL: GDOT 402-3130: RECYCLED ASPH CONC 12.5 MM SUPERPAVE, GROUP 2 ONLY,
 INCLUDING BITUMINOUS MATERIALS AND HYDRATED LIME
 ALL PAVEMENT MARKINGS TO BE THEROPLASTIC INSTALLED PER GDOT STANDARDS

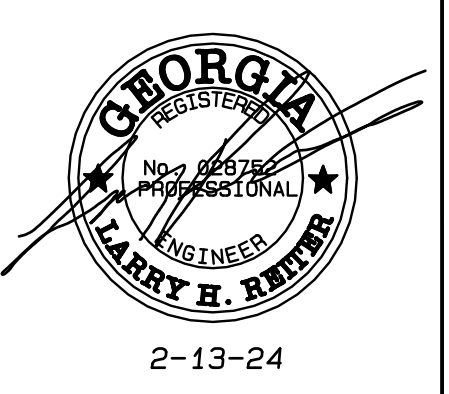


SITE PLAN
CITY OF DAHLONEGA
PLAZA IMPROVEMENTS
 CITY OF DAHLONEGA
 LUMPKIN COUNTY, GEORGIA

DRAWN BY: LR
 FIELD CREW:
 DATE: 10-20-23
 CHECKED BY:

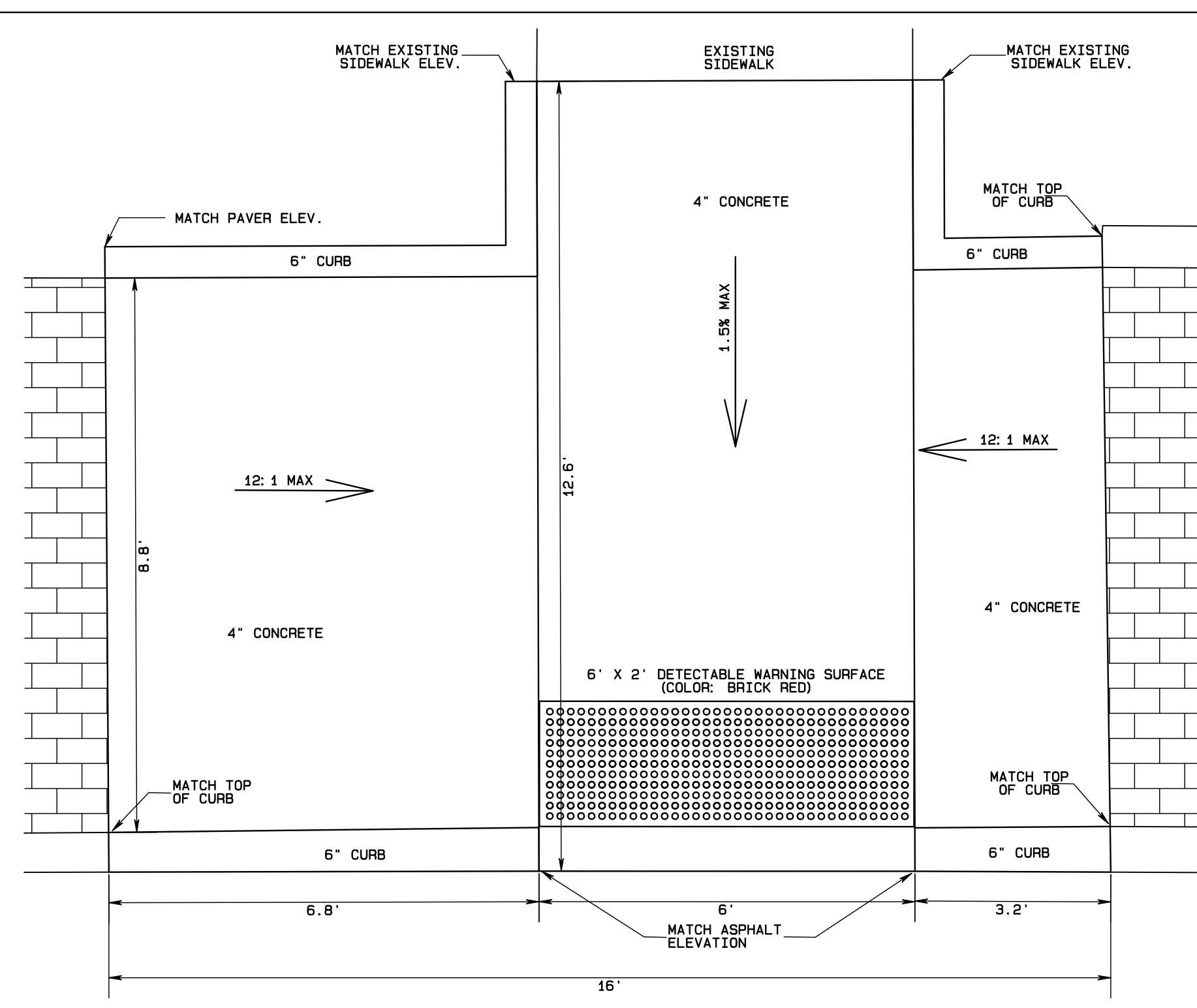
SHEET NO.
 3 OF 4

PROJECT NO.
 2023-453

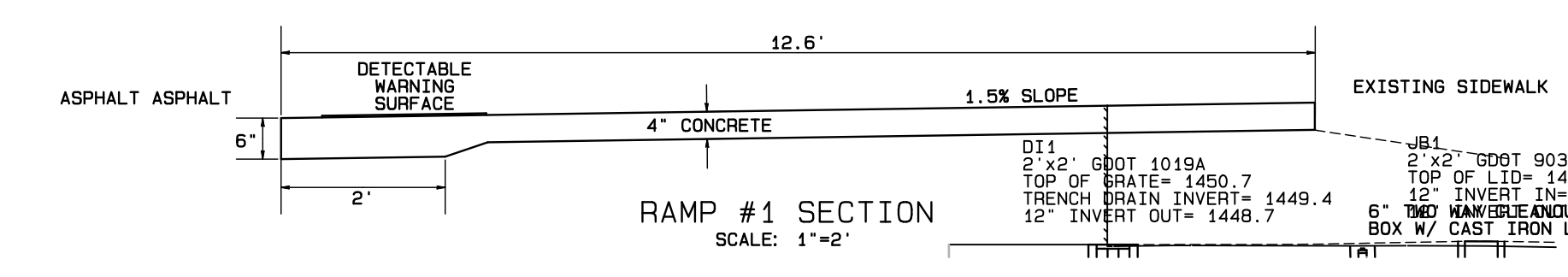


REVISION	DATE	DESCRIPTION
REV 1	11-20-23	REVISED PER CITY COMMENTS
REV 2	12-05-23	REVISED PER CITY COMMENTS
REV 3	2-13-24	ADDED TRENCH DRAIN

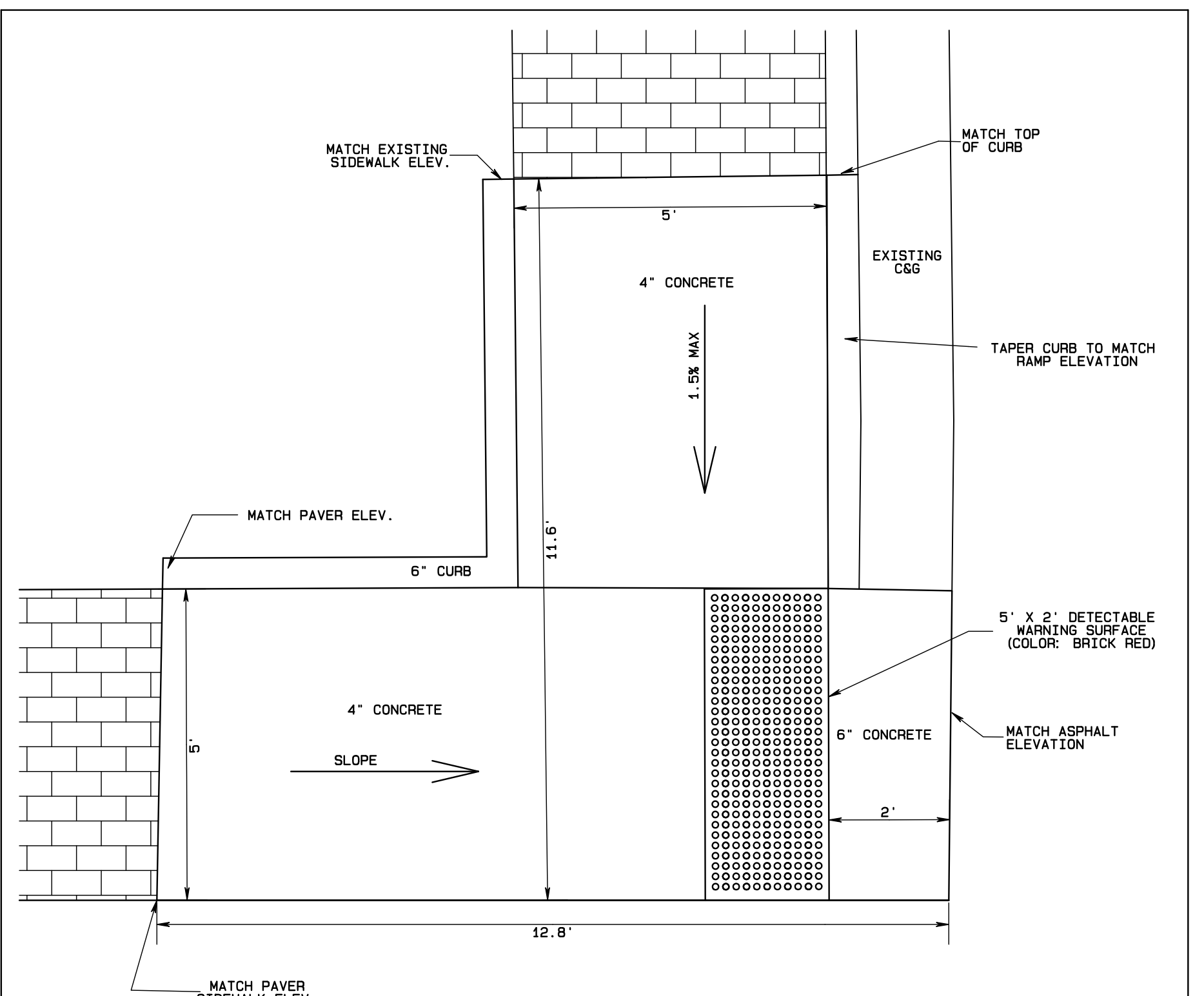
CONSTRUCTION DETAILS
CITY OF DAHLONEGA
PLAZA IMPROVEMENTS
 CITY OF DAHLONEGA
 LUMPKIN COUNTY, GEORGIA



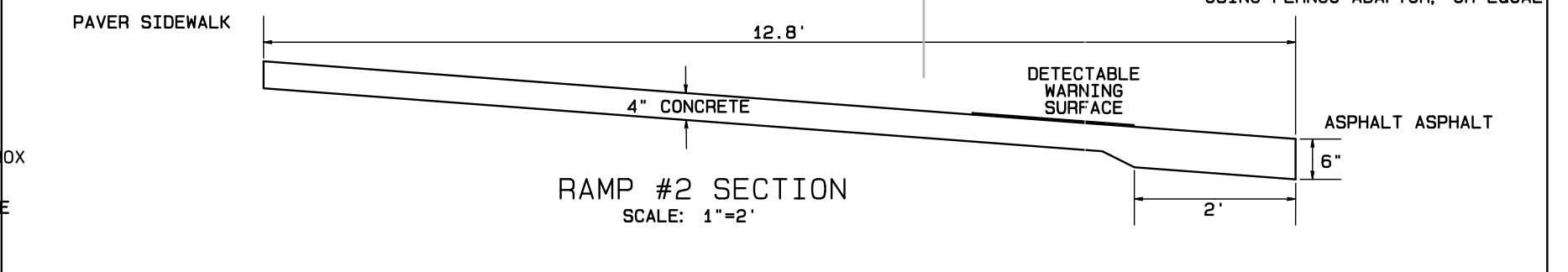
RAMP #1 PLAN
SCALE: 1"=2"



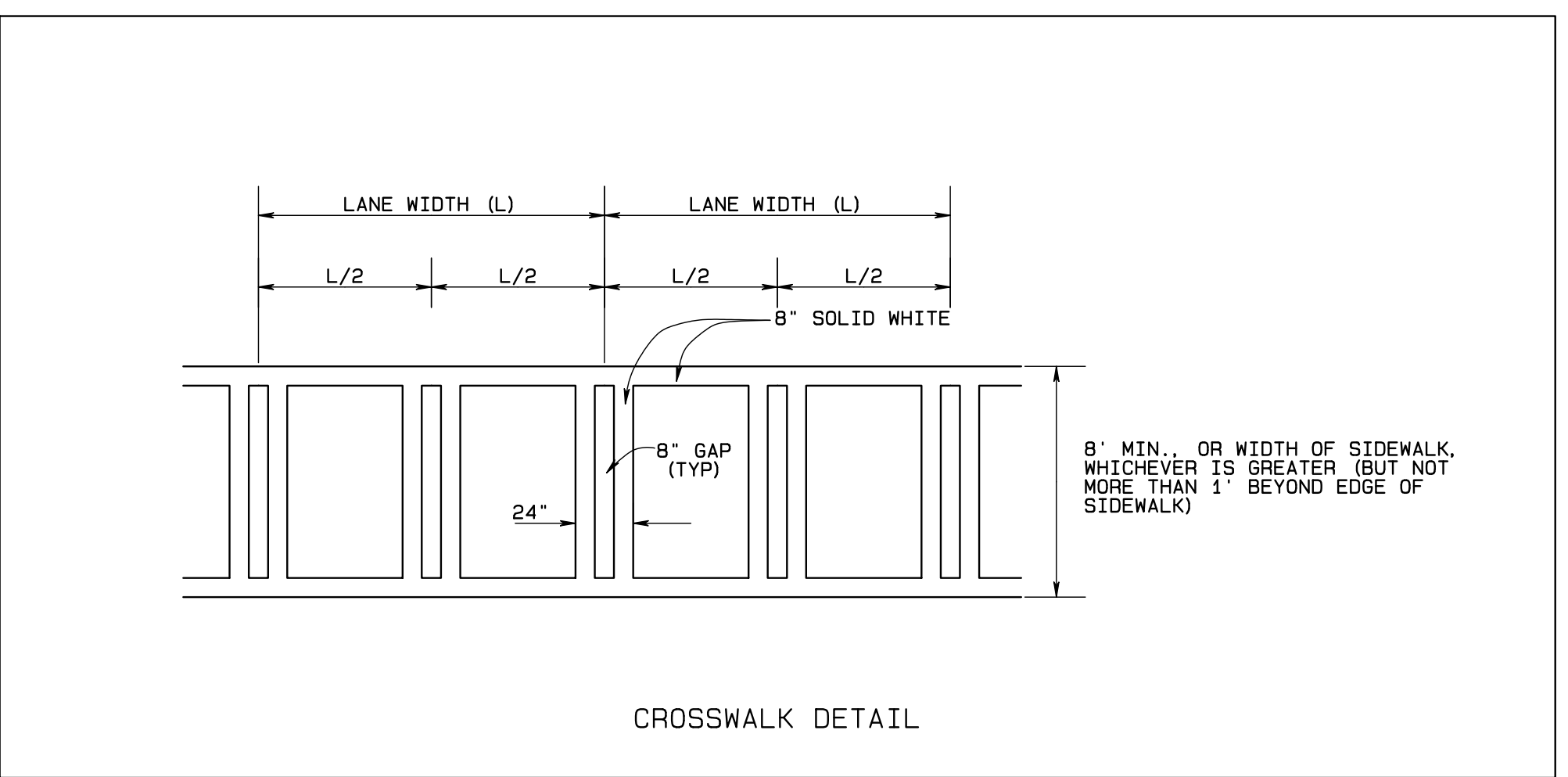
RAMP #1 SECTION
SCALE: 1"=2"



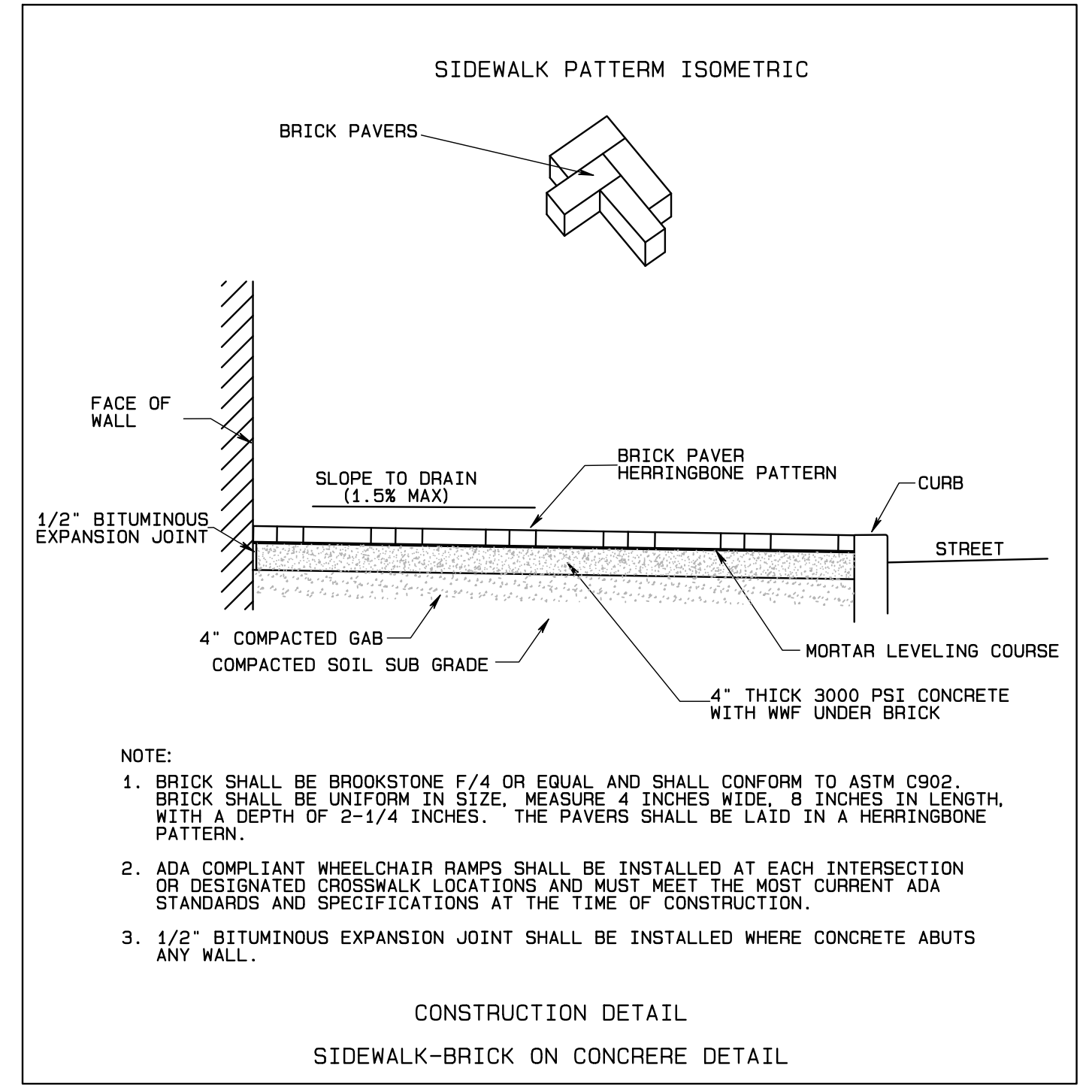
RAMP #2 PLAN
SCALE: 1"=2"



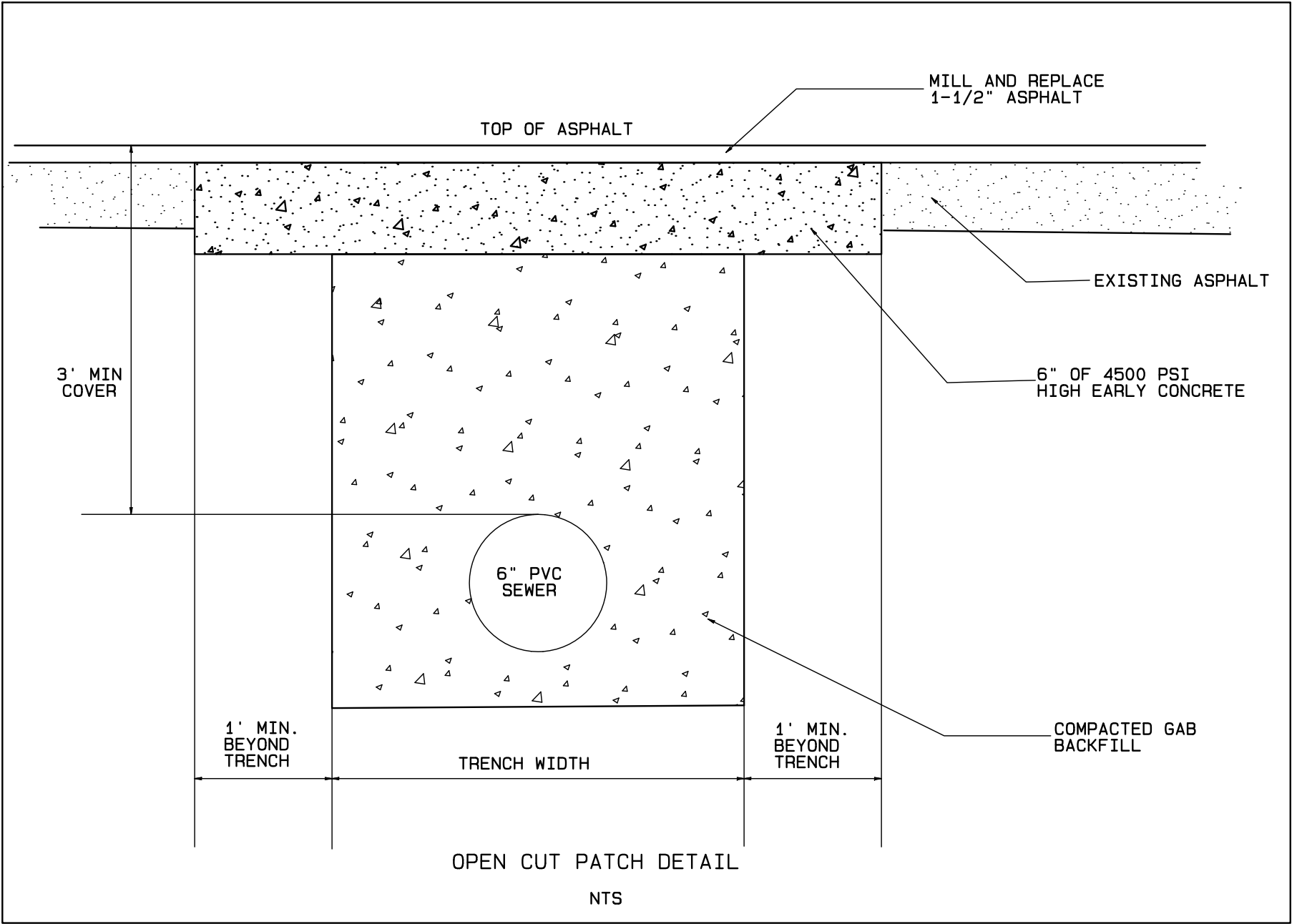
RAMP #2 SECTION
SCALE: 1"=2"



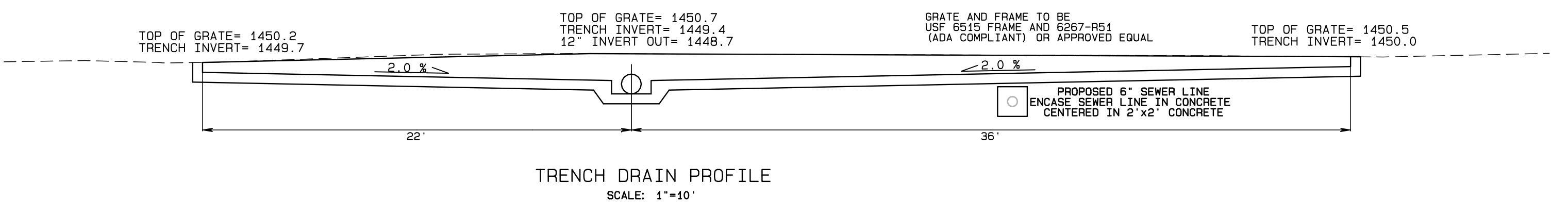
CROSSWALK DETAIL



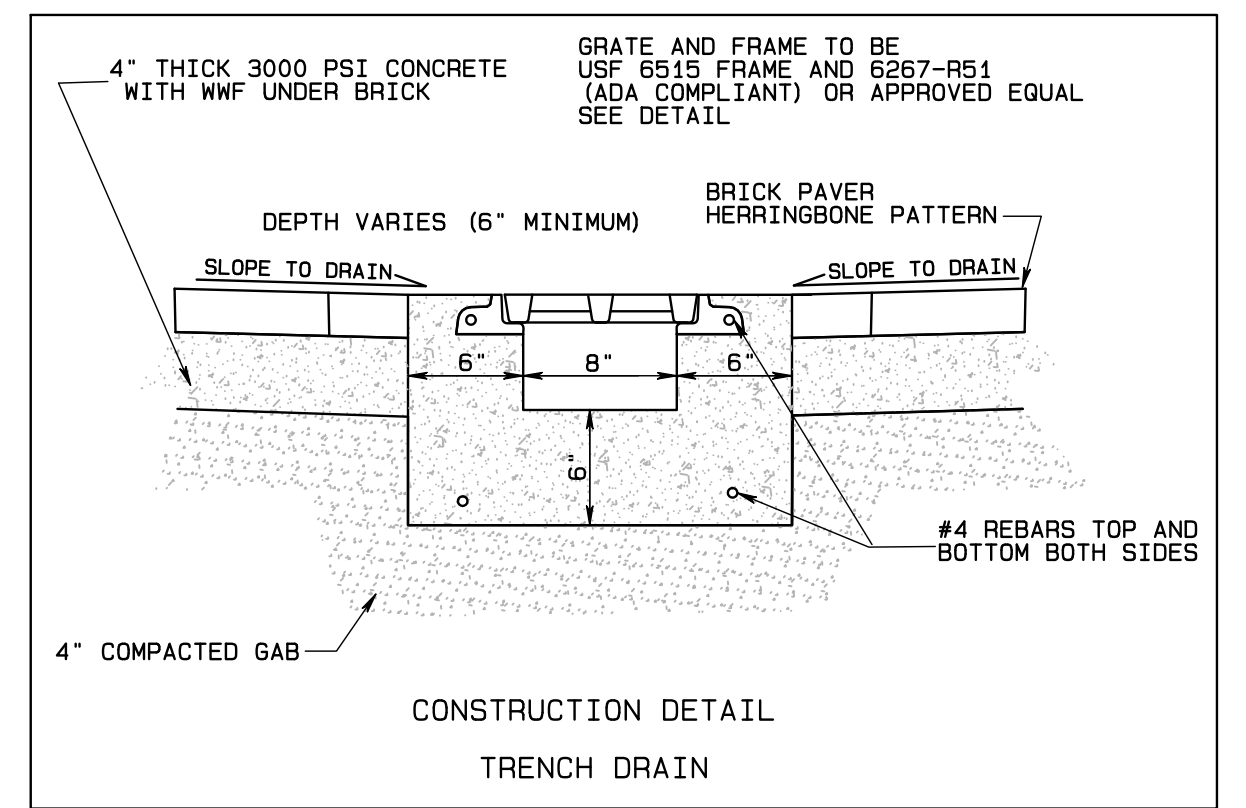
CONSTRUCTION DETAIL
SIDEWALK-BRICK ON CONCRETE DETAIL



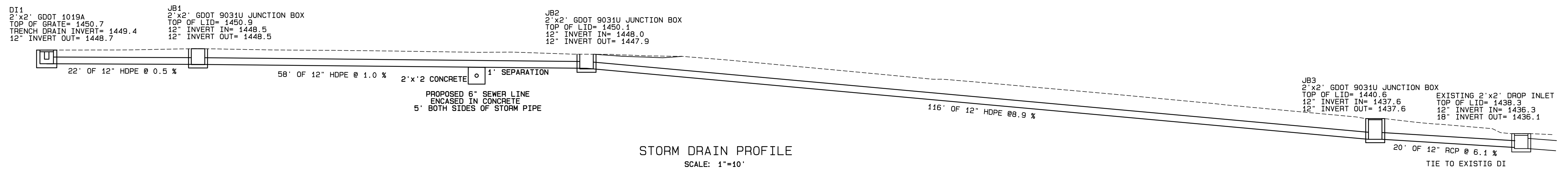
OPEN CUT PATCH DETAIL
NTS



TRENCH DRAIN PROFILE
SCALE: 1"=10"



CONSTRUCTION DETAIL
TRENCH DRAIN



STORM DRAIN PROFILE
SCALE: 1"=10"